



# HIKMICRO

## OWL OH35

### Handheld Thermal Monocular Camera



HIKMICRO OWL OH35 handheld thermal monocular camera is equipped with a  $384 \times 288$  infrared detector and a  $1024 \times 768$  OLED display. It supports functions of observation, highest temperature target tracking, distance measurement, Wi-Fi hot spot, and so on. The high-sensitivity built-in thermal detector provides you with clear view even in total darkness. The monocular is mainly applied to scenarios such as patrolling, searching and rescuing, hiking, travel, and hunting, etc.

#### Key Features

- High sensitivity thermal module with  $384 \times 288$  resolution
- NETD  $<35$  mK (@25 °C, F#=1.0)
- Leading thermal image processing technology: Adaptive AGC, DDE, 3D DNR
- $1024 \times 768$  resolution 0.39-inch OLED display
- Built-in rechargeable Li-ion battery
- Up to 7 hours continuous operation

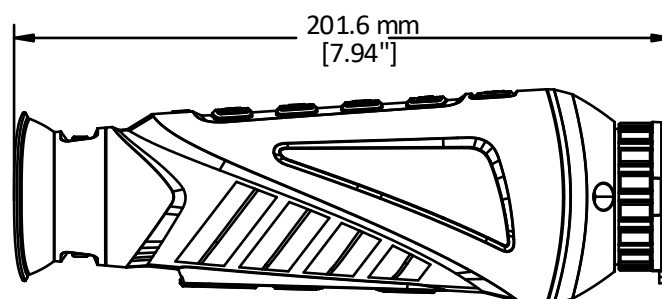
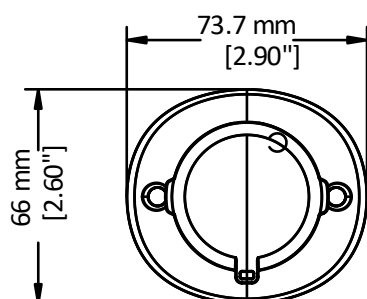
## ▪ Specification

| Thermal Module                   |   |
|----------------------------------|---|
| Image Sensor                     | VOx Uncooled Focal Plane Arrays   |
| Resolution                       | 384 × 288   |
| Frame Frequency                  | 50 Hz   |
| Pixel Interval                   | 17 μm   |
| Response Waveband                | 8 μm to 14 μm   |
| NETD                             | ≤ 35 mK (@25°C), F# = 1.0   |
| Focal Length                     | 35 mm   |
| Field of View                    | 10.66° × 8° (H × V)   |
| Aperture                         | F1.0  |
| Magnification                    | 2.3 to 18.4   |
| Image Display                    |   |
| Monitor                          | 0.39 inch, OLED, 1024 × 768   |
| Palettes                         | Black Hot, White Hot, Red Hot, Fusion   |
| FFC (Flat Field Correction) Mode | Auto, Manual, External Correction   |
| Digital Zoom                     | 1x, 2x, 4x, 8x  |
| Smart Function                   |   |
| Hot Track                        | Yes   |
| Detection Range                  | 1235 m  |
| System                           |   |
| Storage                          | Built-in memory module (16 GB)  |
| Record Video                     | Yes   |
| Capture Snapshot                 | Yes   |
| Wi-Fi                            | Yes   |
| Standby Mode                     | Yes   |
| Power Supply                     |   |
| Battery Type                     | Rechargeable Lithium Battery  |
| Battery Operating Time           | 7 hours continuous running with Wi-Fi hot spot function off (@25 °C)<br>5.5 hours continuous running with Wi-Fi hot spot function on (@25 °C) |
| Battery Capacity Display         | Yes   |
| General                          |   |
| Mounting                         | UNC 1/4' - 20   |
| Hardware Interface               | Type-C USB  |
| Power                            | 5 VDC/2 A   |
| Power Consumption                | 1.5 W   |
| Work Temperature/Humidity        | From -30°C to 55°C (-22°F to 131°F); Humidity: 90% or Less  |
| Protection Level                 | IP67  |
| Drop Test Height                 | 2 m (6.56 feet)   |
| Dimension                        | 201.6 mm × 73.7 mm × 66 mm (7.94" × 2.90" × 2.60")  |
| Weight                           | 500 g (1.10 lb)   |

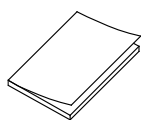
## Available Model

HM-TS03-35XF/W-OH35

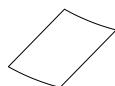
## Dimension



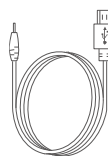
## Accessory



Quick Start Guide  
(x1)



Non-dust Cloth (x1)



USB Cable (x1)



Protective Bag (x1)



Wrist Strap (x1)

**COMPLIANCE NOTICE:** The thermal series products might be subject to export controls in various countries or regions, including without limitation, the United States, European Union, United Kingdom and/or other member countries of the Wassenaar Arrangement. Please consult your professional legal or compliance expert or local government authorities for any necessary export license requirements if you intend to transfer, export, re-export the thermal series products between different countries.